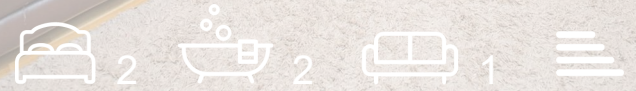




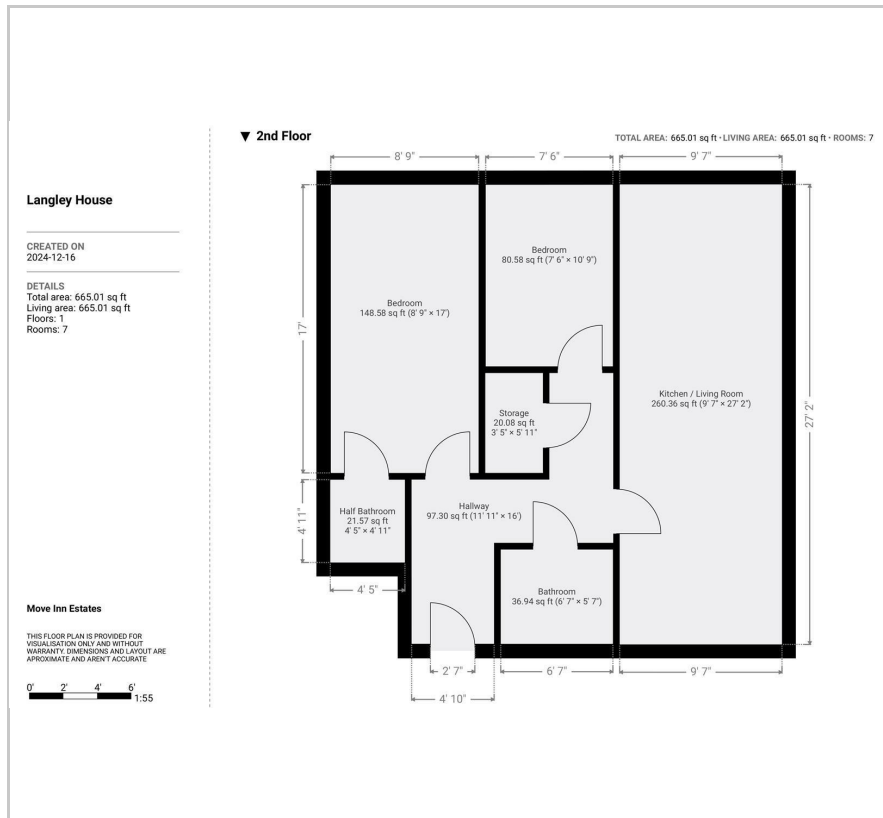
MOVE INN ESTATES
MAKING THE RIGHT MOVE



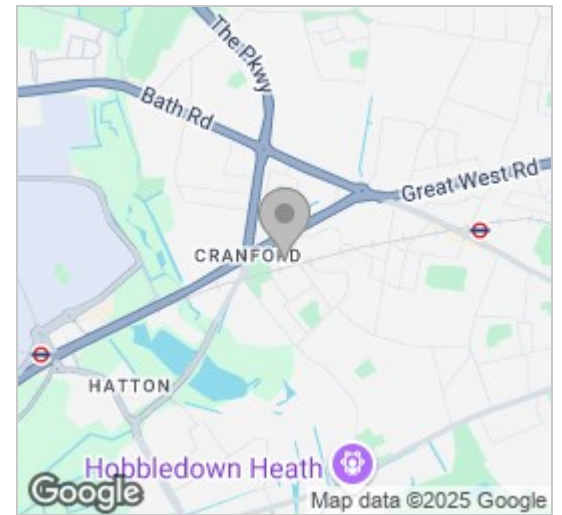
Beavers Lane
Hounslow, TW4 6ES
Price Guide £350,000



Floor Plan



Area Map



Energy Efficiency Graph



Viewing

Please contact our Move Inn Estates - Sales Office on 0208 574 4966 if you wish to arrange a viewing appointment for this property or require further information.

- Second Floor
- Chain Free
- Parking Available
- Two Bedrooms
- No Stamp Duty For First Time Buyers
- Excellent Location

CHANI FREE & NO STAMP DUTY FOR FIRST TIME BUYERS!

Langley House, located on Beavers Lane, offers a practical layout ideal for modern living. This home features two double bedrooms, including two spacious bedrooms, a well-proportioned kitchen/living room, and a central hallway that connects the various living spaces.

Property details:
138 year lease
Service charge - £1,700 PA (approx)
Ground rent - £250 Pa (approx)

Additional storage space is provided to meet everyday needs. With its efficient layout and single-floor design, Langley House is well-suited for those seeking a comfortable and functional living environment. The property is offered with a dedicated parking space.

Situated in a prime location, this property offers both convenience and accessibility to local amenities, making it an excellent choice for families, professionals, or investors.

Viewings advised.



These particulars, whilst believed to be accurate are set out as a general outline only for guidance and do not constitute any part of an offer or contract. Intending purchasers should not rely on them as statements of representation of fact, but must satisfy themselves by inspection or otherwise as to their accuracy. No person in this firm's employment has the authority to make or give any representation or warranty in respect of the property.